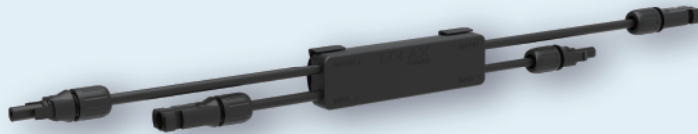


# Rapid Shutdown Device



## XRSD-1C

Prioritizing safety and rapid shutdown capabilities, the XRSD series offers a sophisticated module-level solution that guarantees the smooth functioning of both new and existing PV systems. Once activated by the SolaX Transmitter—XRSD-Core Kit, the XRSD modules ensure your connected PV system remains operational.

In case of emergencies, you have multiple shutdown options: either remotely control each individual panel through the SolaX cloud, toggle the AC breaker on the Transmitter, or engage the E-STOP button. This versatility makes the XRSD system a reliable safety measure for quick deactivation of your PV system as needed.

*Note: To achieve rapid shutdown, please use with the TRANSMITTER KIT (Model: XRSD-CORE KIT).*



### High Efficiency

- Max. 20A PV input current
- Lower power consumption & wider operating voltage



### Assured Safety

- Module-level rapid shutdown
- IP68 with unrivaled reliability



### Intelligent Design

- Easy to install and maintain
- Ultra-low signal noise, won't trigger inverter's AFCI



### Flexible Adaptability

- Compatible with all inverters
- Compatible with all PV panels

## XRSD-1C

<b>Electrical Data</b>	
Input Voltage Range	8-80 V
Output Voltage Range	8-80 V
Maximum Current	20 A
Max. short circuit current	26 A
Recommended fuse rating	30 A
Maximum System Voltage	1500 V
<b>Mechanical</b>	
Dimensions (without cables and connectors)	130 x 36 x 21 mm
Weight	400 g
Input Connectors	MC4 (Standard)
Input Cable Length	0.2 m
Output Connectors	MC4 (Standard)
Output Cable Length	1.2 m
Communication Type	PLC
<b>Environment Limit</b>	
Protection Class	IP68 / NEMA6P
Operating Temperature Range	-40 ~ 85°C
<b>Compliance</b>	
Safety	NEC 2017&2020 (690.12); UL1741; CSA C22.2 No. 330-17; IEC/EN62109-1
EMC	FCC Part15; ICES-003; IEC/EN 61000-6-1/-2/-3/-4
Warranty	10Years